

"SAT-2" 9 Man Saturation Diving System

LIVING ACCOMODATION CHAMBER

Main Living Chamber (17.0 m3) : 6 man
 HRC (12.0 m3) : 4 man
 TC (7.0 m3) : n/a

HYPERBARIC EVACUATION SYSTEM

Type : Float away Chamber
 Launch System : Crane Deployment
 Propulsion : Tow Only
 Capacity Men : 9
 Control Van : Dedicated w / umbilical

DIVING BELL

Capacity Men : 3
 Diver Lockout Capability : 3
 Diver Hat Mounted Camera Systems : 2
 Volume : 4.6 m3
 Mating to DCC : Side
 Buoyancy : Negative

RECLAIM SYSTEM

Pumps : Haskell
 Bell Capacity : 2 diver reclaim
 Dive Control System : LezGas
 Helmets : Helinaut

UMBILICALS

Main Bell : Jacques / 270 meter
 Emergency Bell : Gates / 250 meter
 Lockout Diver 1 : Fibron / 45 meter
 Lockout Diver 2 : Fibron / 45 meter
 Bell Man : Fibron/ 50 meter

LIFE SUPPORT MACHINERY

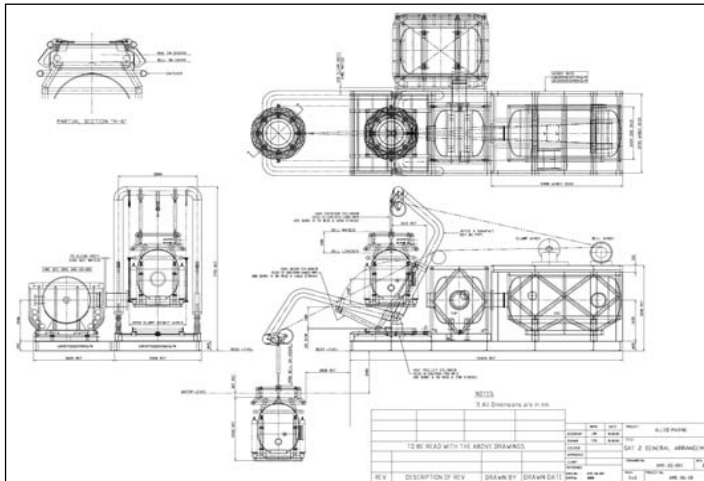
Diver Hot water Unit : LexMar - Electric
 CMU Units & Scrubbers : LexMar

BUILT

Year built : 2008
 Builder : Lexmar Engineering
 Certifying Society : ABS
 Testing / Certification Standard : IMCA 018 / D 024

SERVICES REQUIRED

Electric Power – System : 440V, 50/60 Hz - 490A
 Electric Power –
 Hot water machine : 440V, 50/60 Hz
 Emergency Generator : 600 kVA, 440V, 50/60 Hz
 Compressed Air : 400 cfm, 90 psi
 Seawater : 25 gpm
 Domestic Fresh Water : 38 L.P.M
 Seawater Cooling Requirement : 312 L.P.M



AME- SAT 2 Dimensions

ITEM / DESCRIPTION	LENGTH(m)	WIDTH(m)	HEIGHT(m)	WEIGHT (tons)
Hyperbaric Rescue Chamber (HRC)	4.2	3.6	3.2	14.90
Transfer Chamber (TC)	2.9	2.9	3.1	10.00
Bell (SDC)	2.3	2.3	2.9	7.50
Bell Handling Frame	3.9	3.9	6.3	17.10
Living Chamber (LC), Winch & Hydraulic Power Pack	4.6	3.9	2.1	14.70
MBU Winch	3.4	2.0	2.9	6.00
Machinery Container	6.0	2.4	2.4	6.00
Workshop / Store Container	6.0	2.4	2.4	5.0
Sat Dive Control Container	6.0	2.4	2.4	5.00
HRC Flyaway Control Van	2.7	1.3	2.4	1.20
Bell Clump Weight	2.2	0.6	1.5	1.50
Walkway & Stair Case c/w Handrails	6.0	1.0	4.9	0.50
600 KVA Generator Set x 1	4.6	1.5	2.0	5.00



Allied Marine & Equipment Sdn. Bhd.
 No. 23 Jalan Industri Batu Caves 1/6
 Taman Perindustrian Batu Caves
 68100 Selangor Darul Ehsan, Malaysia

Tel : 603 6185 0844
 Fax : 603 6185 0699
 eMail : info@alliedmarine.com.my

