

"SAT-1" 6 Man Saturation Diving System

LIVING ACCOMODATION CHAMBER

Main Living Chamber (10.0 m3)	: 4 man
HRC (8.3 m3)	: 2 man
TC (7.8 m3)	: n/a

HYPERBARIC EVACUATION SYSTEM

Type	: Float away Chamber
Launch System	: Crane Deployment
Propulsion	: Tow Only
Capacity Men	: 6
Control Van	: Dedicated w / umbilical

DIVING BELL

Capacity Men	: 2
Diver Lockout Capability	: 2
Diver Hat Mounted Camera Systems	: 1
Volume	: 3.93 m3
Matting to DCC	: Top
Buoyancy	: Negative

RECLAIM SYSTEM

Pumps	: Gas Services
Bell Capacity	: 1 diver reclaim
Dive Control System	: Gas Services
Helmets	: Helinaut

UMBILICALS

Main Bell	: Jacques / 270 meter
Emergency Bell	: Gates / 250 meter
Lockout Diver 1	: Jacques / 45 meter
Bell Man	: Jacques / 50 meter

LIFE SUPPORT MACHINERY

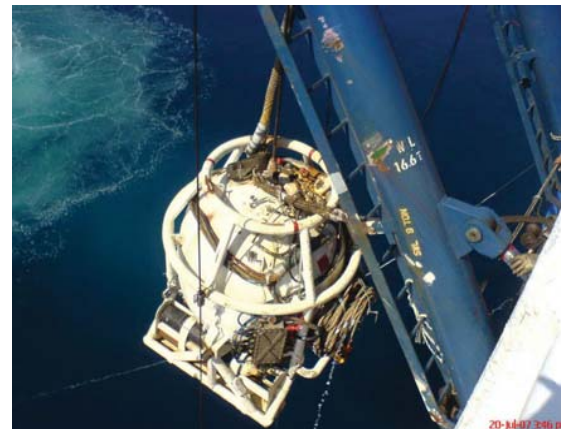
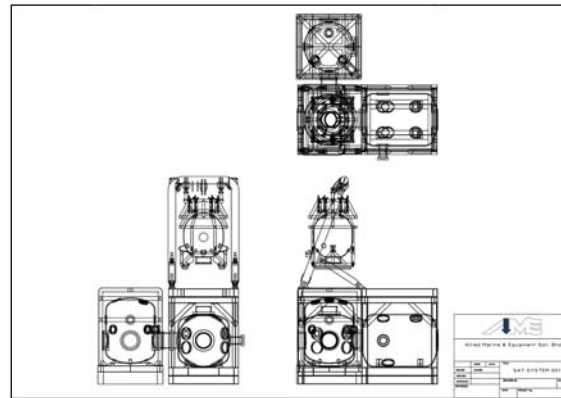
Diver Hot water Unit	: Kinergetics - Electric
CMU Units & Scrubbers	: Kinergetics
Scrubbers	: Kinergetics

BUILT

Year Built	: 2001
Certifying Society	: Germanischer Lloyd
Design Standard	: Lloyds Register
Testing / Certification Standard	: IMCA 018 / D 024

SERVICES REQUIRED

Electric Power – System	: 440V, 60 Hz
Emergency Generator	: 250 kVA, 440V, 60 Hz
Compressed Air	: 400 cfm, 90 psi
Seawater	: 25 gpm
Fresh Water	: 3 gpm



AME- SAT 1 Dimensions

ITEM / DESCRIPTION	LENGTH(m)	WIDTH(m)	HEIGHT(m)	WEIGHT (tons)
Hyperbaric Rescue Chamber (HRC)	3.73	3.15	3.0	11.0
Living Chamber (LC) & Transfer Chamber (TC)	6.5	3.0	3.0	24.00
Bell (SDC)	2.1	2.1	2.6	4.50
Bell Handling Frame	3.8	3.0	6.6	16.60
Winch & Hydraulic Power Pack	4.2	3.0	2.1	14.20
Umbilical Basket	3.5	3.0	1.5	2.0
Machinery Container	6.0	2.4	2.4	6.00
Sat Dive Control Container	6.0	2.4	2.4	5.00
HRC Flyaway Control Van	2.3	1.5	2.4	1.20
Bell Clump Weight	2.2	0.6	1.5	2.30
300 KVA Generator Set x 2	4.6	1.5	2.0	4.00
Chamber Complex Footprint	7.5	7.0	-	-



Allied Marine & Equipment Sdn. Bhd.
No. 23 Jalan Industri Batu Caves 1/6
Taman Perindustrian Batu Caves
68100 Selangor Darul Ehsan, Malaysia

Tel : 603 6185 0844
Fax : 603 6185 0699
eMail : info@alliedmarine.com.my

AME
ALLIED MARINE & EQUIPMENT